



# CRI

## MEDIA KIT

**CONTACT:**

*Bri Harding*  
*(615) 457-0069*  
*media@cricpa.com*



**CRI** CARR  
RIGGS &  
INGRAM

CPAs and Advisors

# FACTS

# CRI

## *and Figures*

1997

*Year Founded*

41

*Offices*

9

*States*

1000+

*Professionals*



**Clients in all 50 states**

### Professional Affiliations

*PCAOB & Moore Stephens*

MORE ABOUT  
MOORE STEPHENS

624 member offices in 101  
countries, over 21,000  
people and fee income of  
\$2.23 billion

**CPAs & Advisors**

*plus Canada, Puerto Rico, and overseas military installations*

4

*PhDs:  
Scholars-In-Residence*

165

*Partners*





# FACTS

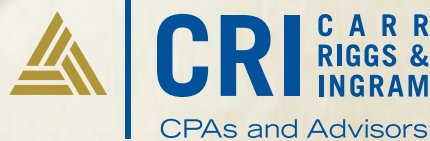
# CRI

## *and Figures*

### SERVICES

- *Accounting*
- *Attestation & Auditing*
- *Business Consulting*
- *Forensic Accounting*
- *IT Audit & Assurance*
- *SEC*
- *Service Organization Controls (SOC)*
- *Tax*

CPAs & Advisors



**National Strength.**  
**Southern Roots.**

*Current Ranking: 28th largest in the U.S.*

# CRI

## Expansion MILESTONES

1997

Carr, Riggs & Ingram, LLC forms with offices in Alabama (Enterprise and Montgomery) and Florida (Destin and Niceville).

1998

CRI named a "Firm to Watch" by *Public Accounting Report*.

1999

CRI adds another Gulf Coast location in Panama City, Florida.

CRI welcomes Birmingham, Alabama, to the fold.

2004

CRI adds Florida's state capitol with a new location in Tallahassee.

2002

2003

CRI breaks into the top 50 national accounting firms list with a #48 ranking by *Public Accounting Report*.

2001

CRI expands to the Magnolia state with a Jackson, Mississippi, office.

2005

CRI enters Georgia with the addition of an Atlanta location.

2007

- "Music City" joins the CRI family, and Nashville residents now have access to CRI services.
- CRI jumps into the Central Florida market with a new presence in Orlando.

2008

Tampa, Florida, becomes the newest CRI office.

2011

- CRI expands in Louisiana by adding an additional office in Metairie.
- CRI joins the Bluegrass state with two new Kentucky offices in Bowling Green and Russellville.
- CRI launches into the Space Coast with a new location in sunny Melbourne, Florida.

2010

- CRI moves into Louisiana with a new office in New Orleans.
- CRI enters Gator Country by adding a Gainesville, Florida, location.
- Texas becomes a CRI state with Austin and Georgetown locations.

CRI races into North Carolina adding nine locations in the Tar Heel state.

2013

2012

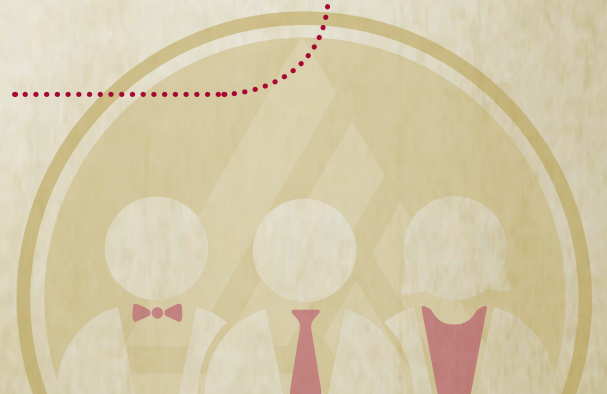
- CRI fills in the Southern Georgia footprint with new locations in Tifton and Valdosta.
- *Accounting Today Magazine's* 2012 Top 100 list ranks CRI as the 29th largest accounting firm in the nation, #4 Pacesetter in Growth nationally for firms over \$100 million, and #1 firm in the Gulf Coast region.
- CRI welcomes additional partners to the team in Nashville, Tennessee.
- CRI sets anchor in Shreveport with another Louisiana location.

2013

CRI expands its' office in Atlanta.

2013

CRI enters the Houston market – adding a third location in the Lone Star state.





# Who We Are



## CPAs & Advisors

### *CRI: About Us*

**National Strength.** CRI's strength emanates from within. Our accounting professionals, their expertise, and knowledge of industry trends and standards assist local staff members throughout the South as they serve our clients. CRI's national strength is derived from our technical expertise that solidifies our standing as the South's premier CPA firm. Performing quality accounting, auditing, consulting, and tax services has always been – and continues to be – our number one objective. Both our peer reviews and PCAOB inspection results are the most favorable possible and reflect this commitment to quality.

### **National Strength.** **SOUTHERN ROOTS.**

**Southern Roots.** CRI both acknowledges and embraces our Southern heritage and the emphasis it requires that we place on client service as we provide accounting, auditing, consulting, and tax services. CRI's core values of client service, respect, and integrity coupled with our dedication to innovation and responsiveness enable our clients to receive skilled guidance. At CRI, we believe that 'Southern' is a spirit, and we know that we embody it.

### *BIO: William H. (Bill) Carr*



Bill Carr is a leader with vision – not only for CRI, but also for all of our clients and their businesses. With more than 40 years of accounting experience,

Bill is CRI's founder, managing partner, and chairman of the Executive Committee. Under his leadership, CRI has become the 28th largest CPA firm nationally and is recognized as one of the nation's fastest growing CPA firms.

Acknowledged as a leader in the accounting profession, Bill is actively involved with the American Institute of Certified Public Accountants (AICPA) and the Alabama Society of Certified Public Accountants (ASCPA). He serves on numerous national panels and committees and is passionate about his dedication to the accounting profession.

*Bill's ability to discuss most any accounting or business topic – coupled with his directness and sense of humor – generates a great interview.*



*Scan this QR code to learn more about CRI and our founding partners.*

*Or*



**CRI** CARR  
RIGGS &  
INGRAM

CPAs and Advisors

CRIcpa.com | blog.cricpa.com